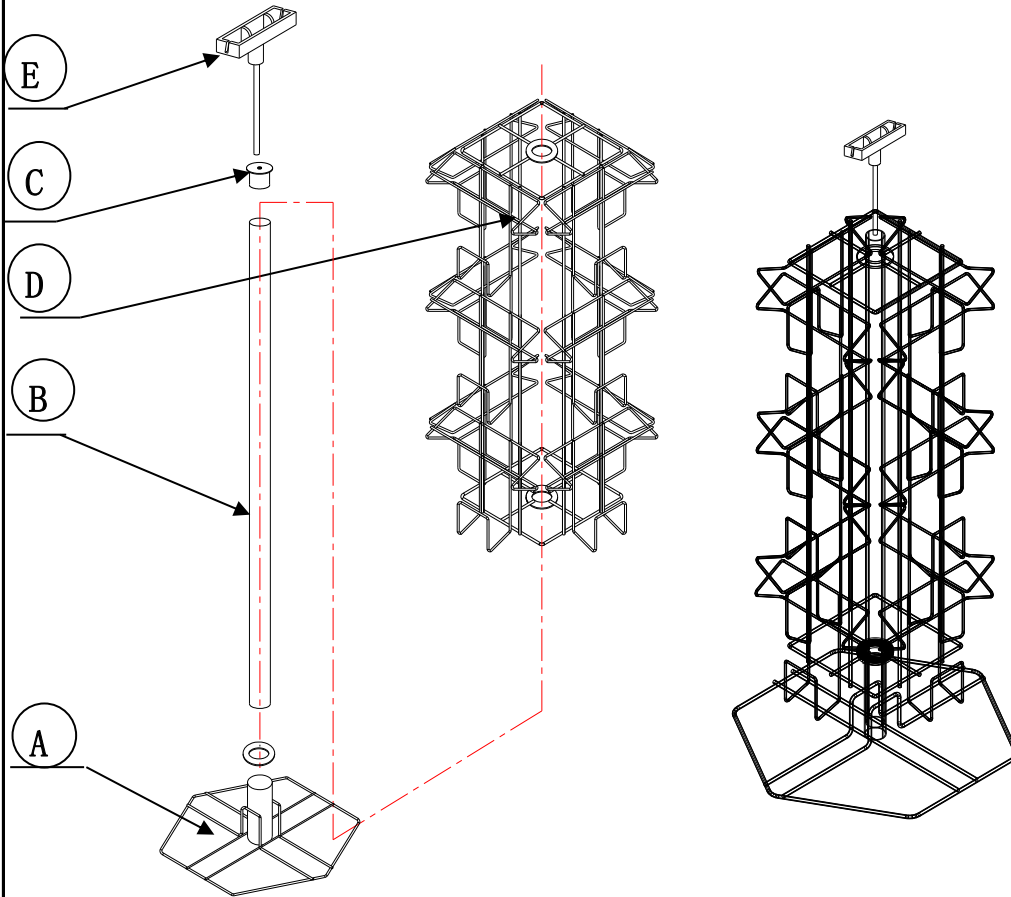


ITEM # SPCARD12

ASSEMBLY INSTRUCTION



PARTS LIST		
ITEM	DESCRIPTION	QTY
A	BASE	1
B	UPRIGHT	1
C	END CAP	1
D	SPINNER RACK	1
E	SIGN HOLDER	1

ASSEMBLY INSTRUCTION

- 1.INSERT UPRIGHT (B) INTO BASE (A)
- 2.SLIDE SPINNER RACK(D)FROM TOP OF UPRIGHT POLE(B)TO RIGHT LOCATION.
- 3.INSERT END CAP (ITEM C) INTO UPRIGHT (ITEM B)
- 4.INSERT SIGN HOLDER (ITEM E) INTO END CAP (ITEM C)